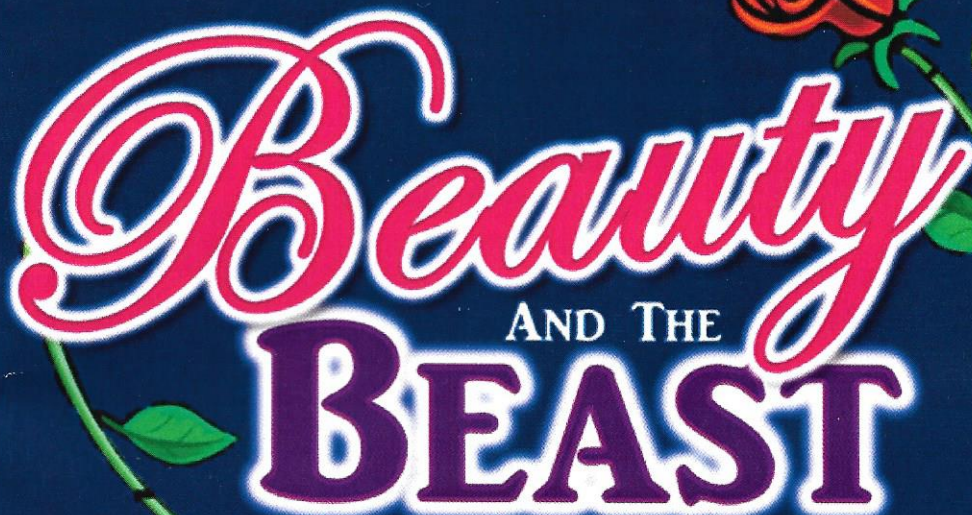


By Arrangement with Stage Right Creative Ltd

PEACEHAVEN PLAYERS

Theatre Group

PRESENT



Beauty
AND THE
BEAST

By Alan P Frayn

OFFICIAL PROGRAMME

5th – 8th DECEMBER 2012

MERIDIAN CENTRE PEACEHAVEN

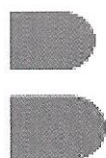
Newhaven Enterprise Centre

high quality, flexible business space on easy in, easy out terms

Good luck and break a leg Peacehaven Players

from everyone at Newhaven Enterprise Centre

Newhaven Enterprise Centre,
Denton Island,
Newhaven,
East Sussex BN9 9BA
t: 01273 815260
e: newhaven@basepoint.co.uk



BASEPOINT
making a difference

◆ PREMIER ◆

TAXI

(01273)

58 - 55 - 55

58 - 58 - 55

Reliably Servicing Telscombe & Peacehaven
for over 25 Years

WELCOME...

Hello and welcome to the Peacehaven Players 2012 production of Beauty and the Beast!

There have been a few changes since your last visit to the Peacehaven Players. In June we held our annual general meeting, and the committee saw some departures as well as some new arrivals.

After 4 years, Chris Jenner stepped down as chairperson, and we'd like to say a huge thank-you to her for all her hard work over the years. Chris will be continuing on the committee as social secretary. We also said goodbye to Wendy Clare who stepped down as Member without portfolio, and again we would like to thank her for all her hard work and contributions. 2012 saw two new members join the committee, with Danny Rainsford joining as secretary, and Sarah Holman as publicity.

In other news, Peacehaven Players are pleased to announce that we are now online! Our new website was launched in August, and we'd like to say a big thank-you to James Holman for producing it for us. It's a one stop shop for all things Peacehaven Players, including news, shows and soon to be added gallery, so be sure to check it out—visit us at www.peacehavenplayers.co.uk.

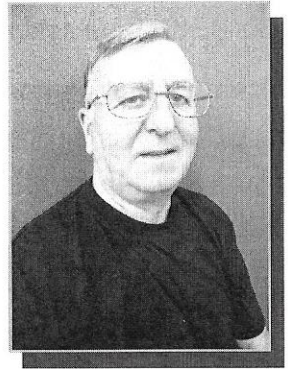
In addition you can find us on Facebook, so for more information or to let us know your thoughts on the show, visit www.facebook.com/peacehavenplayers.

Remember, we're always looking for new members, so if you'd like to get involved don't hesitate to ask one of our front of house team for more information.

All that's left to say is we hope you enjoy the show, and on behalf of the whole group we wish you a Merry Christmas, and a Happy New Year!

Jim Jenner

(Chairman)



DIRECTORS NOTES

So it's Panto time again. Oh yes it is!

Welcome to our pantomime "Beauty and the Beast". The story begins when Prince Danton is turned into a hideous beast by the Evil Fairy and forced to live as a beast in his enchanted castle! The Good Fairy tries to help, even when Belle is held captive by the Beast.

Will Belle fall in love with the Beast and will her love turn him back into a Prince before the five enchanted roses die?

Be sure to shout at Madame Fifi, laugh with Jacques the lad and BOO the two nasty sisters, plus not forgetting Gustave—the vain and cowardly hunk.

Sit back and enjoy our panto and make sure to watch out for the young assistants that some of the characters have to help them through the show.

My thanks go to the entire cast for all of their hard work, to my assistant director **Wendy Clare**, to **Julie Harrison** and **Mandie Fairhall** for their wonderful choreography, and to our musical director **Joshua Winstone** and the band. In addition my thanks go to **Michele Harden** and her entire team for all their hard work behind the scenes on set design and crew, and thanks to **Chris Jenner** and the wardrobe team for their creative costumes. Additional thanks go to **Rhiannon Donovan** for kindly donating Belladonna's costume.

I hope you enjoy the show!

Jim Jenner

(Director)

In association with Stage Right Creative Ltd
Peacehaven Players Present

BEAUTY^{AND} THE BEAST

STARRING

Belle	Sian Clare
Ermengarde	Judith Foot
Esmeralda	Georgina Bancroft
Alphonse	Tony Garwood
Madame Fifi	Mandie Fairhall
Jacques	Claire Mullan
Gustave	Daniel Foot
Prince Danton	Sarah Holman
The Beast	Mark Rushton
Marcel	Danny Rainsford
Monique	Amy Garbo
Madame Le Fou	Pat Tuckett
Flora	Wendy Clare
Belladonna	Carol Sturley
Ghost	Jess Parker

Chorus/ Villagers

Maureen Bywaters, Jess Parker, Lynne Holman, Christine Twibill, Pat Tuckett

Junior Cast

Junior Flora	Daniella Battman
Villager	Leanne Battman
Junior Belladonna	Susanna Battman
Junior Assistant	Sophie Chadwick
Junior Assistant	Sarah Harden
Junior Assistant	Matilda Harrison
Jacques Sidekick	Hattie Mack
Villager	Phoebe Coltart

And The Harlequin Dancers

ACT ONE

Prologue	Coming up Roses?
Scene 1	The Village of Franglais de la Mer
Scene 2	A Woodland Glade
Scene 3	The Fearsome Forest
Scene 4	The Enchanted Castle
Scene 5	Meanwhile, Back Near the Village
Scene 6	At the Castle Gates
Scene 7	A Beastly Banquet

ACT TWO

Scene 1	Return to the Village
Scene 2	The Plot Thickens
Scene 3	The Secrets of the Castle
Scene 4	The Beauty Parlour
Scene 5	Outside the Gates Again
Scene 6	Back Inside the Castle
Scene 7	Gustave's Gambit
Scene 8	The Last Rose of Summer
Scene 9	Chanson à Chanter!
Scene 10	The Finale

MUSICAL NUMBERS

Act One

"Wake Up Boo"	Belle and Company
"Everybody Ought To Have A Maid"	Madame Fifi
"The Lazy Song"	Jacques and Company
"I'm Too Sexy"	Gustave and Company
"Haven't Met You Yet"	Prince Danton
"Ghost Busters"	Madame Fifi, Alphonse and Jacques

Act Two

"I'm So Excited"	Company
"Keep Young And Beautiful"	Marcel, Monique and Company
"Wishing You Were Somehow Here Again"	Belle and Prince Danton
"If I Can't Love Her"	The Beast
"Chanson D'Amour"	Madame Fifi
"Don't Stop Believing"	Whole Company

CREDITS

Director	Jim Jenner
Assistant Director	Wendy Clare
Musical Director	Joshua Winstone
Choreography	Mandie Fairhall Julie Harrison
Band	Joshua Winstone Mikey Parsons Stan MacDonald David Coles



Ballet
Modern
Contemporary
Tap
Jazz
Latin
Ballroom
Street
Disc
Dram

Harlequin Studios

Est: 1973

The number one dance and drama studio in Peacehaven, Sussex

IDTA dance exams & LAMDA drama exams

Adult classes available

Pupils prepared for festival work

Dance & drama classes available for all
ages & abilities

www.harlequinstudios.co.uk

01273 581742

PRODUCTION

Technical Manager

Michele Harden

Stage Manager

Steve Whatman

Deputy Stage Manager

Ben Taylor

Crew

Laura Meredith

Lex Meredith

Colin Rainsford

David Harden

Set Design

Michele Harden

Lighting

Mike Medway

Sound

Dave Stening

Wardrobe

Chris Jenner

Maureen Bywaters

Wendy Clare

Sian Clare

Pat Tuckett

Front of House

Front of House Team

Script by

Alan P Frayn (provided by
Stage Right
www.stagerightcreative.com)

STUDIO CRAFTS

FAMILY RUN JEWELLERS



Handmade Jewellery to your Design

Repair & Restoration Specialists

Large Selection of Gold & Silver Jewellery

Free Estimates



WORKSHOP ON THE PREMISES



138 SOUTH COAST ROAD
PEACEHAVEN
BN10 8ER
01273 587717

SALES@STUDIO-CRAFTS.CO.UK

STUDIO-CRAFTS.CO.UK

EST 1979

COASTWAYS

- CARPETS
- VINYLs
- CURTAINS
- BLINDS

FREE
HOME SELECTION SERVICE



FREE MEASURING SERVICE
MANY NATURAL STYLES
LARGE RUG DEPARTMENT

LARGE ENOUGH TO COPE. SMALL ENOUGH TO CARE

96 South Coast Road,
Peacehaven
Tel. (01723) 585040

PRESENTING...

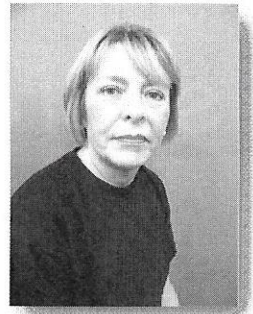


Amy Garbo - Monique

Amy joined the Players in 2005, playing in Snow White. Her first main part was as Erma in Anything Goes. She says, *"I love being a part of the panto, acting makes me come out of my shell more from being a shy person. I've made loads of new friends from the group, and it's a great place to drink tea and have a gossip about my love of Hollyoaks and rubbish tv!"*

Georgina Bancroft - Esmeralda

Georgie has been a member of Peacehaven Players since 1998, with her first role as the good witch in The Wizard of Oz. She says, *"I love the sense of belonging to a great amdram group and all of us working towards putting on the best show possible. I have loved acting since I was very young - which is a long time ago now! It has given me such pleasure over the years and I have met many interesting people and a wonderful group of friends. One of my favourite roles has been playing the bad witch in panto - I loved the sheer feeling of power, but I'm not sure what that says about me!"*



Chris Jenner - Front of House

Chris first joined the Players in 2001 for her first show Aladdin. Although she doesn't get involved onstage, she's been roped in to do almost everything else! She says, *"Peacehaven Players is my husband Jim's hobby, I just came along to see what went on! I'm not quite sure how I ended up here 11 years later. I enjoy being at Peacehaven Players because it's a really good fun and social group."* We might succeed in getting Chris to join us onstage one day - she was once part of Roy Castle's cabaret act!

THE PLAYERS

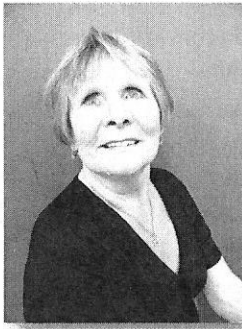
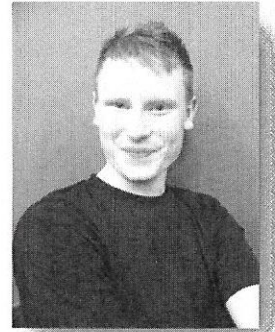


Daniel Foot - Gustave

Dan has been a member of the Players since 2005, in his first show Snow White, where he played the dwarf Idduno. Dan says, *"The best part of being in Players is having fun with my friends. Acting has always been a passion of mine so it's great to be able to do it on a regular basis."* Acting isn't Dan's only talent, he's currently studying Biology, Chemistry, Politics and Psychology at A level!

Danny Rainsford- Marcel

Danny joined the Peacehaven Players in 2011, for his first show Snow White, in which he had his first main part as Slurp. He says, *"I like being at Players because it's very sociable and I've made some fantastic friends. I love acting because it's so much fun to entertain and it's something so different from my usual working day. It's a great challenge to become someone else and make others believe in a character."* When he's not onstage Danny is a nurse at the Royal Sussex and he'd like to one day specialise in end of life care. He also admits he's way too obsessed with American TV programme Glee!



Carol Sturley - Belladonna

Carol first joined Peacehaven Players in 1998, and her first show was That's Entertainment. Her first main role was as the Wicked Witch of the West. She says, *"The best thing about Peacehaven Players is getting to be up on stage among friends and act. I've always loved acting, and have been in a few amateur groups around Sussex. Players is so sociable, and it great to be able to do something I love on a regular basis."*

PRESENTING...

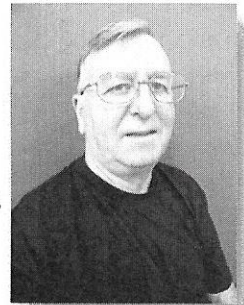


Jess Parker - Ghost/Chorus

Jess first joined Peacehaven Players in 2009, appearing in Little Bo Peep. She says, *"Players has been great for meeting new people, all of whom have different acting experiences. I love acting because it gives you the chance to come out of your comfort zone. In the past I've also been a member of the tech crew, which gave me a different understanding of how a show comes together, it was really interesting."* As well as acting, Jess is a keen dancer, having done so for many years, and she'd love to have a career in the dance industry.

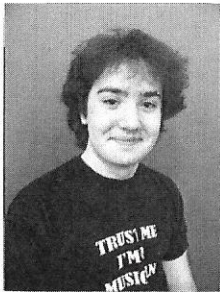
Jim Jenner - Director/Chairman

Jim has been a member of Peacehaven Players since 2001, performing in his first show Aladdin. He says, *"The best thing about being a member of the Players is being a part of a team and meeting new friends. I just love being on stage and sharing my acting experiences with others through directing shows. Although it may not be a favourite of others, I really enjoy auditioning for new parts!"*



Joshua Winstone - Musical Director

Josh recently joined the Players in 2012, for his first show Showstoppers. He says, *"Unlike other groups, Peacehaven Players feels like family – I know that whenever I go I will always be welcome. It's also a place of hard work and everyone pulls together to provide the best results. My passion for musical direction stems from my love of teaching people to sing and play instruments to the best of their ability, hopefully enjoying themselves and producing the best performance for the paying public."* Despite his young age Josh has a lot of experience as an MD, performing in shows including Little Shop of Horrors, Annie, Grease, The Wiz, as well as working with many West End performers in Brighton and Hove's West End Experience from 2009 – 2011.



THE PLAYERS



Lynne Holman - Chorus/Villager

Lynne has only just joined the Players, and Beauty and the Beast is her very first show! She says, *"The opportunity to meet new, like-minded people is great and they are quickly becoming friends. It's my first time acting on stage but now that I've started I've caught the acting bug! I've always enjoyed watching shows in London and locally, so to be in one myself is definitely a new and exciting experience"*

Judith Foot - Ermengarde

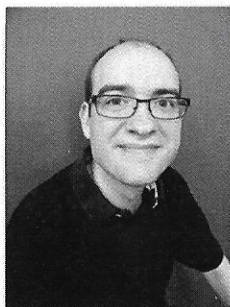
Judith first joined Peacehaven Players in 2001, for Trial by Jury, with her first main role in Dick Whittington. She says, *"I love performing onstage, whether it's acting, singing or dancing, and being at Players has also given me the chance to direct. I have been singing all my life, starting off with my guitar in nursing and old people's homes before successfully auditioning for Brighton Schools Choir at 11, which led to me spending a season in Joseph and the Technicolor Dreamcoat at the Theatre Royal. I joined Brighton Theatre Group in 1979 and in 1996 I began studying opera, joining Opera Viva as a soloist 2 years later. I am currently trying my hand at writing a musical comedy, which hopefully will soon be performed by the Players!"*



Mandie Fairhall - Madame Fifi

Mandie has been with the Players since 1999, appearing in her first show Sleeping Beauty. Her first main role was in Dick Whittington. She says, *"The reason I love being a member is getting the chance to sing and act, it's my absolute passion! I also love the social aspect of it, and being around friends doing something we love."* Mandie is unique because she has played the part of the pantomime dame not only once but twice, and let's face it, it's not easy being a woman playing a man playing a woman!

PRESENTING...

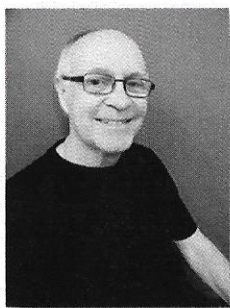
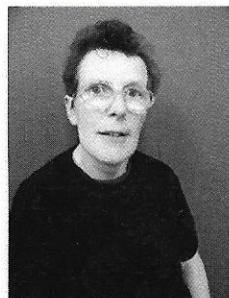


Ben Taylor - Deputy Stage Manager

Ben has only recently joined the Players, and he'll be part of our tech crew for the first time in *Beauty and the Beast*. He says, *"Joining the Players has allowed me to meet new people, and the chance to be a part of the team designing sets and props. I love creating something the audience will appreciate, and even though I have just joined I have felt very welcomed. It's given me some great experience and skills, and getting the chance to be involved is very exciting!"* Ben is also a keen film fanatic, and is a triplet!

Christine Twibill - Chorus/Villager

Christine has been with the Players since 2004, when she appeared in her first show *Blitz*. She says, *"The most enjoyable thing about being a member of players is meeting like-minded people - we all get on so well. I also like doing the fund raising events, the coffee mornings are great fun. I mainly love to sing, I really enjoy it and it always makes me happy."*



Tony Garwood - Alphonse

Tony joined us in 2012 for his first show – *Showstoppers*. His first main role is as Alphonse in *Beauty and the Beast*. He says, *"The most enjoyable thing about being a member at Players is getting the chance to act! I have always enjoyed becoming someone else and giving enjoyment to others. I like working with others to create something special. Everyone is so very friendly here, you feel right at home from your first meeting"*. Although this is only his second show with the Players, Tony is no stranger to the world of theatre. He has previously played the lion in *The Wizard of Oz*, as well as Fagin in *Oliver Twist*. He has also been involved "behind the scenes", directing performances of *Aladdin*, *Jack and the Beanstalk*, *The Wizard of Oz* and *Guys and Dolls*.

THE PLAYERS



Wendy Clare - Flora

Wendy has been with the Players since 2002, when she appeared in her first show Kiss Me Kate. Her first main role was as a naughty policewoman in Dick Whittington. She says, *"Being in Players encourages us to expand our own experiences and I have had the opportunity to get involved with so many different activities, including set design and construction, make up, costumes, and directing/ producing. As well as the opportunities, I also really enjoy the social aspect of Players, and I really like doing the coffee mornings and other fundraisers."*

Claire Mullan - Jacques

Claire first joined Peacehaven Players as a junior in 2002 in Oliver, and then joined as an adult in 2010 for The Wiz. Her first main part was playing Snow White in our previous pantomime. She says, *"The best thing about Players is without a doubt the people. I've made some lovely friends. Acting is my absolute passion, it's what I want to do in life and therefore I'm pursuing my dream to become a professional actor, having already taken part in paid professional acting jobs."*



Our Junior Cast

ABOUT PEACEHAVEN PLAYERS...

Peacehaven Players are a musical theatre group who aim to stage two shows a year, a major summer production and a pantomime in the winter. The group was officially formed in January 1998, with just 8 members, increasing to a massive 48 by the time of our first show "The Boyfriend" in April of the same year.

GET INVOLVED!

We are an open company and new members are always welcome. Not an actor? We still want to hear from you. Peacehaven Players offers something for everyone, from working backstage to front of house, painting scenery, props, making costumes, or even just general help, there's always something for you to get involved in! For the budding actors among us, everyone is welcome to get up on stage! We have a policy that all new acting members appear in the chorus for their first show, and thereafter all new members are able to audition for parts if they so wish. If you are happier staying in the chorus, that's completely fine too!

Our main aim for the Peacehaven Players is, of course, to have fun. It's of utmost importance that we enjoy what we do, but it's not all about the acting! There's a great social side to being a member of the Players. We run regular fund raising events such as coffee mornings and car boot sales, which is a great way to get to know everyone and meet even more members of the community. We also try to get together for meals and nights out for the chance to socialise outside of rehearsals.

If you'd like to get involved, or you'd like to know more, don't hesitate to ask one of our front of house team for more information.

Alternatively you can visit our website – www.peacehavenplayers.co.uk or visit our Facebook page – www.facebook.com/peacehavenplayers.

PREVIOUS SHOWS

1998

THE BOYFRIEND | LONDON TOWN | CINDERELLA

1999

FIDDLER ON THE ROOF | STEPPING OUT | SLEEPING BEAUTY

2000

CALAMITY JANE | THAT'S ENTERTAINMENT | WIZARD OF OZ

2001

HELLO DOLLY | TRIAL BY JURY | ALADDIN

2002

KISS ME KATE | DICK WHITTINGTON

2003

OLIVER | VARIETY SHOWTIME | JACK & THE BEANSTALK

2004

OKLAHOMA | BABES IN THE WOODS

2005

BLITZ | A NIGHT AT THE MUSICALS | SNOW WHITE

2006

MY FAIR LADY | ROBINSON CRUSOE

2007

RADIO TIMES | CINDERELLA

2008

ANYTHING GOES | SLEEPING BEAUTY

2009

THANK YOU FOR THE MUSIC | LITTLE BO PEEP

2010

CHART TOPPERS | ALADDIN

2011

THE WIZ | SNOW WHITE

2012

SHOWSTOPPERS | BEAUTY & THE BEAST

OUR PATRONS

Peacehaven Players would like to express our sincere thanks to our loyal patrons who have supported us over the years. Our current patrons are:

SUE FAIRHALL
CHRIS FAIRHALL
ROGER TANT
ELSIE TANT
IAN INGLE
DEBBIE INGLE
TERRY BYWATERS


As a community group the support we receive from you, our audience members, and our patrons is vital for the future of the Peacehaven Players. If you have enjoyed our shows and would like to show your support without becoming an active member, then why not become a patron?

Becoming a patron gives you the benefits of free tickets, concessions, a regular newsletter, and a sneak peak at shows and "behind the scenes" action at special rehearsal evenings.

For an application form, or for more information please see our front of house team, or contact us on 01273 681861.

We would like to once again thank you for supporting the Peacehaven Players.

PEACEHAVENPLAYERS

Theatre Group 

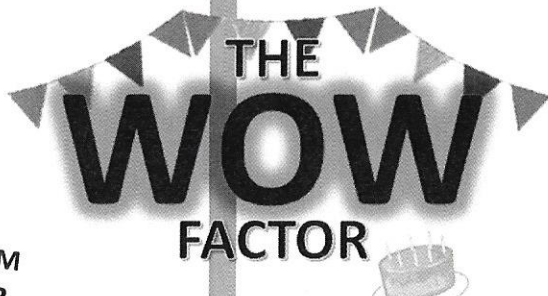
PRESENT

AN ORIGINAL SCRIPT
BY JUDITH FOOT

BEACH

LESSER MOULDERING

COMING 14TH AND
15TH JUNE 2013!



TICKETS
AVAILABLE FROM
FEBRUARY 2013

A BRAND NEW
SHOW!

This summer brings an exciting new show to the Peacehaven Players! The Peacehaven Players are proud to present **THE WOW FACTOR**, a brand new show by Judith Foot, it's one that you won't want to miss out on!

When the Village Hall Committee of Lesser Mouldering decide to hold a talent show, they find that they've bitten off more than they can chew! Chaos, mayhem and a laugh a minute ensues, with plenty of toe tapping numbers and a warm feel good factor. This show within a show is a musical play that will have you smiling and singing all the way home.

JUNE 14TH AND 15TH 2013

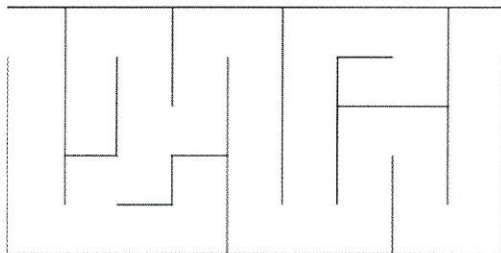
TICKETS AVAILABLE FROM FEBRUARY 2013 ON 01273 681861.

WIN A SMARTPHONE!

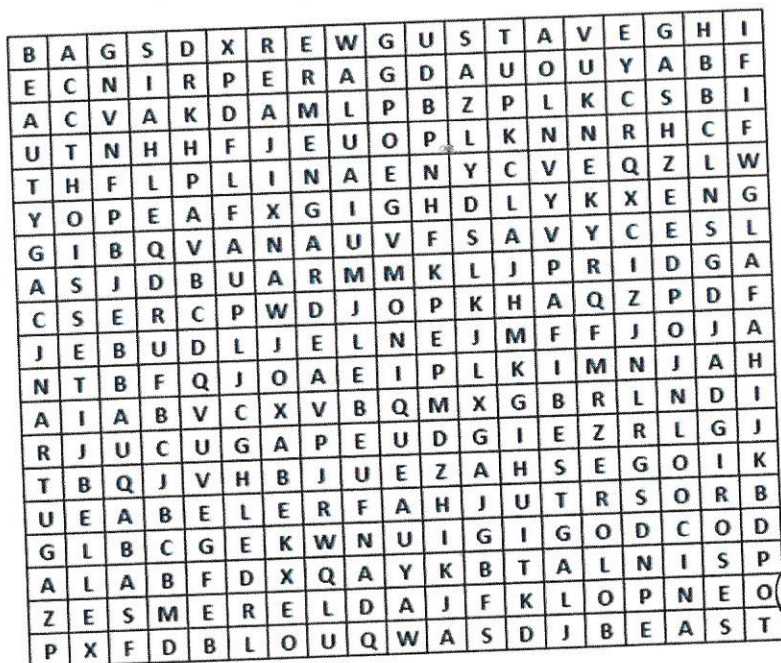
We're giving you the chance to win a smartphone! It's only £1 a ticket for you to be in with a chance of winning. All you need to do is fill in a form, take it to the raffle table where they will give it an authentication stamp. Then you need to post it in the designated box. This competition runs for the entire length of the run (5th—8th December 2012) and a winner will be picked at random on Sunday 9th December. Only the winner will be notified. Not in conjunction with the normal raffle.

Belle's PUZZLES

Belle's lost her mirror! She can't find her way through the maze - can you help her? Go through the maze and try to find the correct route to the mirror, and help Belle save the Beast.

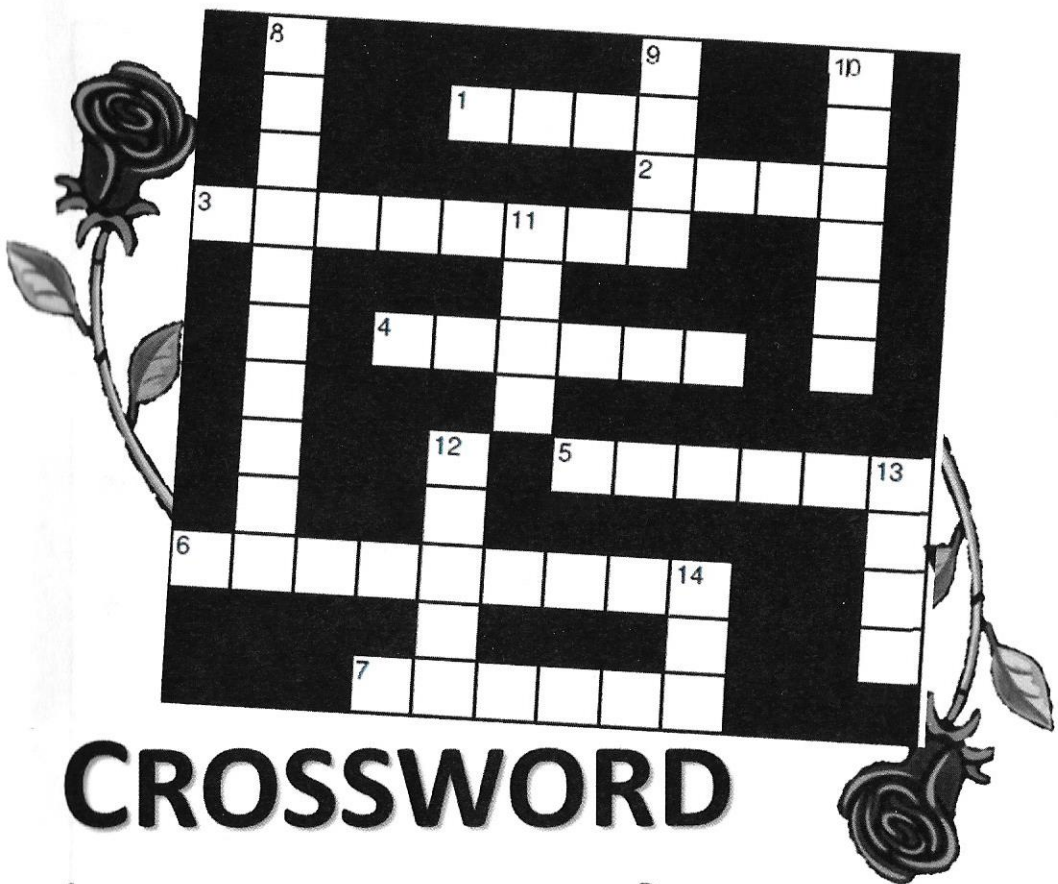


WORDSEARCH



BEAUTY
BEAST
ROSES
PRINCE
LOVE
MIRROR
PEACEHAVEN PLAYERS
MARCEL
MONIQUE
GUSTAVE
ERMENGARDE
ESMERELDA
FIFI
BELLE
JACQUES





CROSSWORD

Across

- 1 Currency in France
- 2 Make musical sound with voice
- 3 Belle's fathers' name
- 4 Prince's name
- 5 Magical furniture you can see yourself in
- 6 Beauty and the Beast is a "-----"
- 7 Where the Beast lives



Down

- 8 Wicked Witch name
- 9 There are 5 of them all red and smell sweet
- 10 "-----", Camera, Action
- 11 How many squares on the ballroom floor? (Careful)
- 12 Name of the Good Fairy
- 13 Jewellery which Gustave wants to give to Belle
- 14 When does Santa come? Christmas "----"

COMMUNITY SONG LYRICS

Madame Fifi and Jacques need your help in singing this song, makes sure you sing it loud!!

**She'll be coming 'round the mountain when she
comes (when she comes)**

**She'll be coming 'round the mountain when she
comes (when she comes)**

**She'll be coming 'round the mountain, she'll be
coming 'round the mountain**

**She'll be coming 'round the mountain when she
comes (when she comes).**

Oh, when the saints go marching in

Oh, when the saints go marching in

I want to be in that number

Oh when the saints go marching in

Providing quality veterinary care in your local community



meridian
VETERINARY PRACTICE

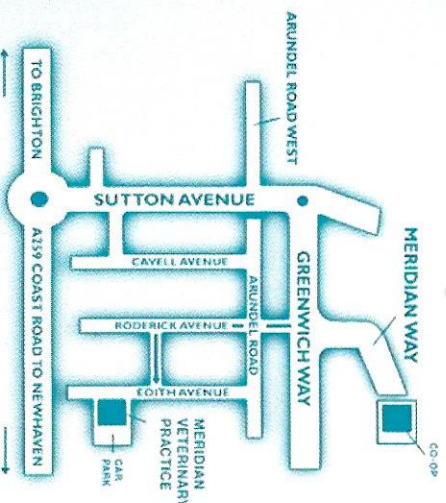
Meridian

Veterinary Practice

11 Edith Avenue

Peacehaven BN10 8JB

- Independantly owned
- RCVS Tier 2 accredited practice
- Spacious consulting rooms
- Modern operating theatre
- Separate cat and dog recovery wards
- X-ray and ultrasound suite
- All facilities on site
- Free weight checks
- Free pet care leaflets
- 24 emergency service always available



8am to 6pm Monday to Friday
8am to 12 Saturday morning

01273 585386

www.meridianvets.co.uk
vets@meridianvets.co.uk



J. Wagstaff Co

Established 1911

Independent Family Owned Estate Agents
Sales & Lettings

227 South Coast Road, Peacehaven, BN10 8LB
01273 582277

Est. 1911

J. WAGSTAFF

Funeral Directors



Serving the Community for 100 years

- Golden Charter Pre-Payment Plans
- Private Chapels
- Horse Drawn and Woodland Funerals
- Home Visits Arranged

Well established family business • Personal service
advice and understanding • 24 hours a day

PEACEHAVEN
231 South Coast Road

(01273) 582188

SALTDEAN
7A Longridge Avenue

(01273) 303065

BRIGHTON
29 College Place

(01273) 603013